

Free Library Internet Account Application

What is the Internet?

The Internet is a worldwide network of millions of computers connected via phone lines, dedicated data circuits, and satellites. To access the Internet, you may simply find an Internet computer station in the library and start using it or apply for a free library Internet account and connect with your home computer for the cost of a local phone call.

The library belongs to Metro Net, a virtual consortium of eight public libraries that have combined resources and expertise to offer Internet access to the patrons they serve.

What do I get?

- A Metro Net user account and password
- 24-hour free access to the Internet via a local phone number
- Access to the library's online catalog
- Access to magazine, newspaper, health and other databases that the library subscribes to
- Directions for configuring your software

What do I need to browse the Internet with graphical access?

To search the Internet with text and graphics (see Figure 1) you need a recommended minimum* of:

- A 486-based PC or Macintosh 040 computer
- 16 megabytes of RAM
- 20 megabytes of free disk space
- Windows 3.1, Windows 95, or Macintosh System 7.5

Continued on page 2.

**It's possible to connect with less powerful equipment and less RAM, but your system may run very slowly.*



Figure 1. This is a sample of looking at information on the Internet with a graphical browser such as Netscape Navigator or Internet Explorer.

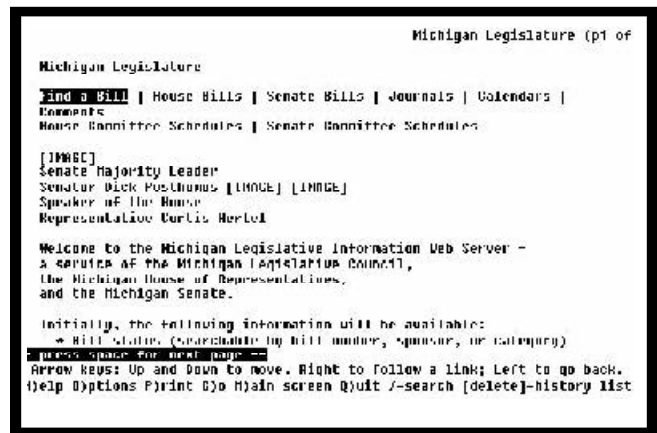


Figure 2. Older machines may be used to browse the Internet with text access. This is how the page in Figure 1 will appear using text-only access.

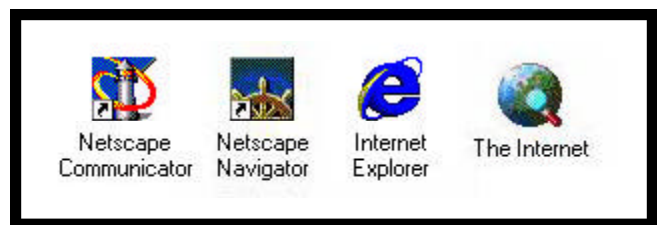


Figure 3. Icons such as these generally indicate that your computer has browser software pre-installed. You'll just need to enter a few settings to start surfing the Internet!

Continued from page 1.

- 14.4 baud modem and phone line (the computer can share your regular home phone line, but no one can use the phone while you are connected to the Internet).
- Metro Net account
- Browser software such as Netscape or Internet Explorer (see Figure 3, page 1)
- Dialer software such as Trumpet Winsock, MacTCP/MacPPP, Windows95 dial-up networking adapter (these are often included with commercial browser programs)

What do I need to browse the Internet with text-only access?

To search the Internet with text only (see Figure 2 page 1) you need a minimum of:

- Almost any computer
- Almost any modem and a phone line (the computer can share your regular home phone line, but no one can use the phone while you are connected to the Internet).
- Metro Net account
- Communications software that supports VT100 emulation such as ProComm, Windows Terminal accessory, Windows 95 Hyperterminal

What is not available?

- E-mail
- Chat rooms and newsgroups
- Personal Web pages

You will receive information about how to find these services for free from other sources that you may use in conjunction with your library account.

Who is eligible for an account?

In order to obtain an account, we require that you:

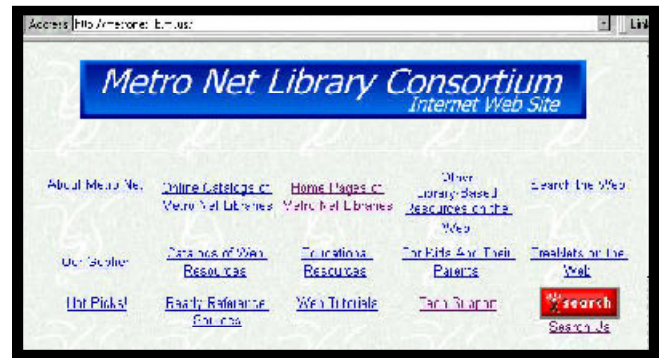
- Live, work, or own property in Canton Township

- Maintain a valid Canton Public Library card account without overdue items or fines
- Obtain the signature of a parent or legal guardian if you are under 18 years old

What is Metro Net?

Metro Net is a virtual library consortium comprising the Baldwin Public Library (Birmingham), Bloomfield Township Public Library, Canton Public Library, Farmington Community Library, Independence Township Library, Rochester Hills Public Library, Southfield Public Library, and West Bloomfield Township Public Library.

Founded in 1994, this organization's purpose is to expand traditional library services into the electronic realm of the Internet. This consortium has been on the leading edge of bringing electronic services to its patrons. It was the first in Michigan to offer free dial-in Internet access and one of the first to offer home pages for public libraries. By sharing the library's information technologies and staff expertise, the libraries have been able to offer far more than any single library could have.



If you already have access to an Internet browser, be certain to visit the Metro Net home page as well as your local library's home page. The address is: <http://metronet.lib.mi.us>

Metro Net Acceptable Use Policy

Metro Net Library Consortium applies technology to provide free electronic access to digital information resources, including the Internet, on-line catalogs of member libraries, and a variety of external databases.

The following conditions of use apply to all users of the system:

1. All use of Metro Net must be consistent with Metro Net's primary goals.
2. Available resources may vary from site to site. Metro Net Library Consortium, Inc. endeavors to provide quality links to Internet resources, but we have no control over the information accessed, and cannot be held responsible for its content. Likewise, Metro Net assumes no responsibility for any damages, direct or indirect, arising from use of its servers or connections to other Internet resources. Metro Net will do its best to provide error-free, dependable access to Internet resources, but we recognize that Internet connections are subject to the vagaries of weather, exceptional user demand, remote server problems, et al. Metro Net can not be held liable for any information that may be lost, damaged, or unavailable due to technical, or other, difficulties.
3. With regard to children and teenagers, we recommend that parents take an active interest in, and responsibility for, their children's on-line use. While young people have a right to privacy, they also need parental involvement and supervision in their daily lives. The same general parenting skills that apply to daily life apply on-line.
4. While Metro Net Internet Accounts are free, users are always guests on the system, and should act with respect and consideration for one another.

There are certain uses which are unacceptable under any circumstances, and which may result in a user losing Metro Net account privileges and facing prosecution:

- It is not acceptable to use Metro Net for purposes contrary to state or federal laws.
- Metro Net accounts may be used either in a PPP session with a web browser, or through a telnet session using a completely menu-driven character-based interface. In either case, users are urged to regularly change their passwords to maintain security. Secure passwords use a combination of at least 7 characters, including upper- and lower-case letters, numbers, and punctuation marks; they should not be comprised of common names, birthdays, etc.
- Use of shells at the operating system level is not permitted
- It is not acceptable to use Metro Net so as to interfere with or disrupt other users, services or equipment. This includes, but is not limited to, distribution of unsolicited advertising (i.e., so-called "spamming,") flooding available bandwidth by attempting to run multi-user games when in PPP mode, sending or forwarding so-called chain letters, propagation of computer worms, viruses, installation of .suid or .rhosts files, or any attempt whatsoever to go to superuser status. Use of IRC-Internet Relay Chat is not supported. No attempts at "cracking"-whether internal or external-will be tolerated
- It is unacceptable to share passwords or accounts with others.
- Commercial transactions are not permitted.
- Strict disk quotas will be enforced for all users. Users are responsible for keeping their total file space below the allotted maximum of two megabytes.
- Users must comply with the login time restrictions set by the library from which they obtained their Metro Net account.
- Library card accountholders must remain in good standing.

Approved by the Metro Net Board of Directors, December, 1997.

Library Internet Account Application

- 1 I agree to abide by the Metro Net Acceptable Use Policy listed on page 3 (<http://metronet.lib.mi.us/welcome/AcceptableUsePolicy.html>). I accept responsibility for all use of this account.

Applicant Signature _____ Date _____

Parent or Guardian Signature (if under 18) _____

- 2 Please print and complete clearly:

Last Name: _____ First: _____

Home Phone: _____ Work Phone: _____

Library Card #: _____ *E-mail: _____

**Complete this item if you wish to receive periodic e-mail notices from the library.*

- 3 If you currently have a Metro Net account and want the password to be reset, please print your user I.D.: _____

- 4 Please check the option that best describes your system. If you do not know which one you have, please review our on-line Help Center (<http://metronet.lib.mi.us/help>). A librarian can show you how to find this information on one of the library's Web browsers if you need assistance.

Windows XP

Windows Millenium Edition

Windows 98

Windows 95 - Detailed

Windows 95 - Preloaded Browser

Windows 2000

Windows NT 4.0

Windows 3.1 - Netscape Communicator

Windows 3.1 - Trumpet Winsock

Windows 3.1/95 - Text only

DOS

Macintosh OSX

Macintosh OS 9

Macintosh OS 8

Macintosh System 7.5 or older

Other - Basic connection information

- 5 Complete the mailing label below as clearly as possible. Take this application to the Circulation Desk for eligibility verification. Please also have current photo identification ready to verify that you are eligible for an account. You will receive an instructional packet in the mail.

Staff use only

Staff Initials: _____

Date: _____

Resident

Non-resident

Name: _____

Address: _____

City: _____ State: _____ ZIP: _____