

Specific Setup Information

Windows 95 – Detailed

I. Install Dial-Up Networking

Turn the computer, monitor, and modem (if external) on.

After Windows has started up and you see the desktop with icons, click on Start, then Settings, then Control Panel as shown in Figure 1.

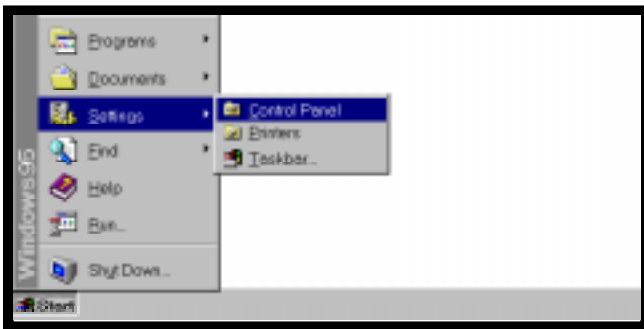


Figure 1. Starting the Control Panel from Start.

You will see a window similar to Figure 2.

Double click on the Add/Remove Programs icon.



Figure 2. The Control Panel window.

Click on the Windows Setup tab.

Click on Communications. Your screen should resemble Figure 3.

Click on the Details button.

Make sure there is a check mark in the box next to Dial-Up Networking as shown in Figure 4. Other components may or may not be checked, depending on your needs. Click on the OK button. Click on the OK button again. You may



Figure 3. The Add/Remove Programs window.

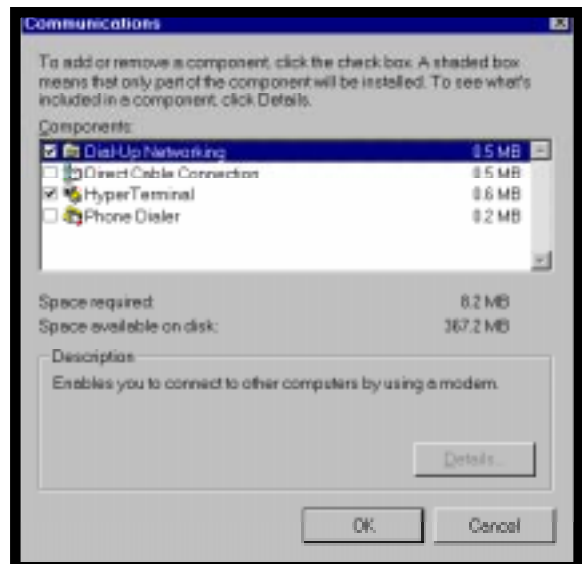


Figure 4. The Communications window.

be asked at this time to insert a Windows 95 CD-ROM or floppy disk. Follow the on-screen instructions, and restart your machine if asked to do so.

From the Control Panel window (click on Start, Settings, Control Panel), double click on the "Network" icon shown in Figure 5 on page 2.



Figure 5. The Control Panel window.

The Network window shown in Figure 6 will appear.

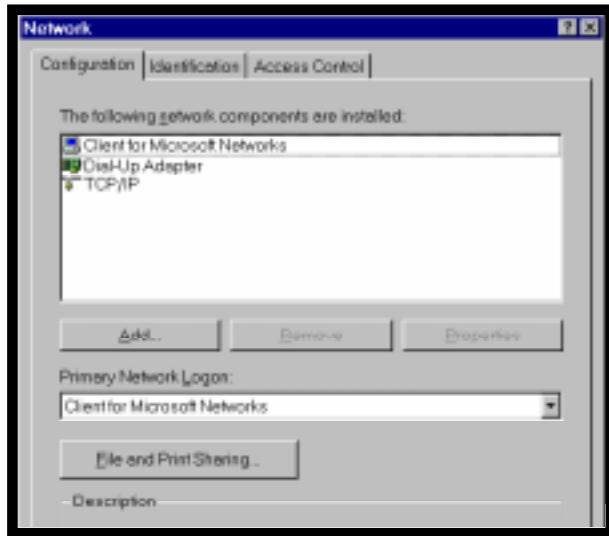


Figure 6. The Network window.

The Dial-Up Adapter and TCP/IP must be installed. It is also helpful to have Client for Microsoft Networks installed. *If these are already installed on your machine, please skip the relevant steps below.*

To install the Dial-Up Adapter, click on the Add button to bring up the window in Figure 7.

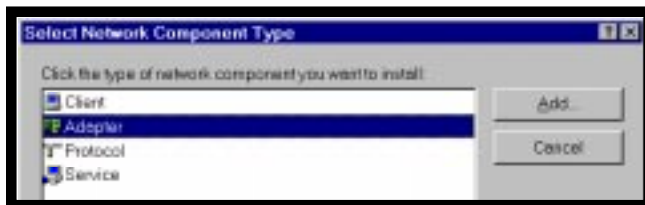


Figure 7. The Select Network Component window.

Click on Adapter and then on the Add button. The Select Network Adapters window shown in Figure 8 will appear. Under Manufacturers, click on Microsoft. Under Network Adapters, click on Dial-Up Adapter. Click on the OK button.

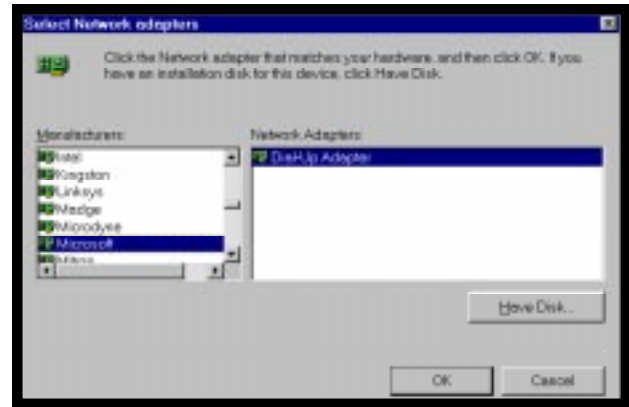


Figure 8. The Select Network Adapters window.

You will see the Network window shown in Figure 9.

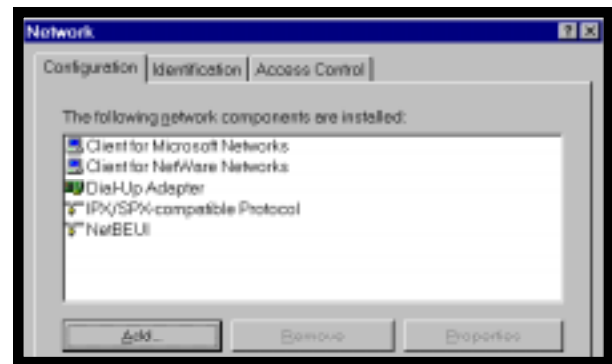


Figure 9. The Network window.

To install TCP/IP, click on the Add button. You will see the window shown in Figure 10.

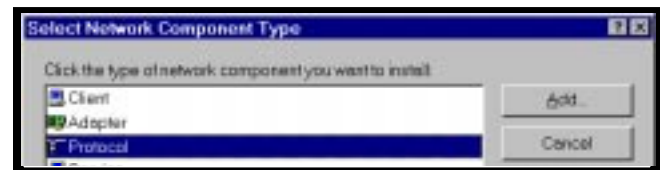


Figure 10. The Network Component Type window.

Click on Protocol and then on the Add button. You will see the window shown in Figure 11.

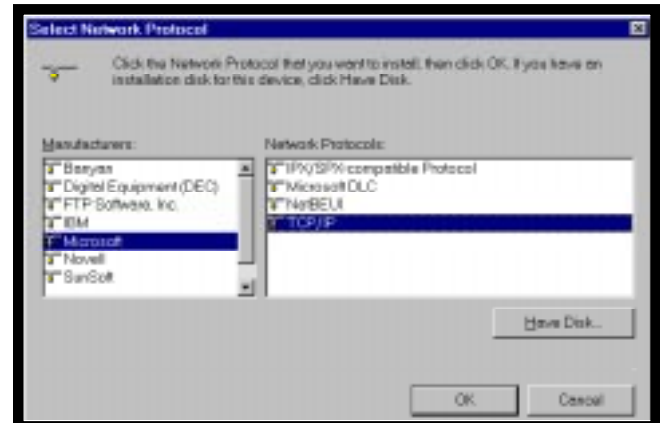


Figure 11. The Select Network Protocol window.

Under Manufacturers, click on Microsoft. Under Network Protocols, click on TCP/IP. Click on the OK button. Your screen should resemble Figure 12.

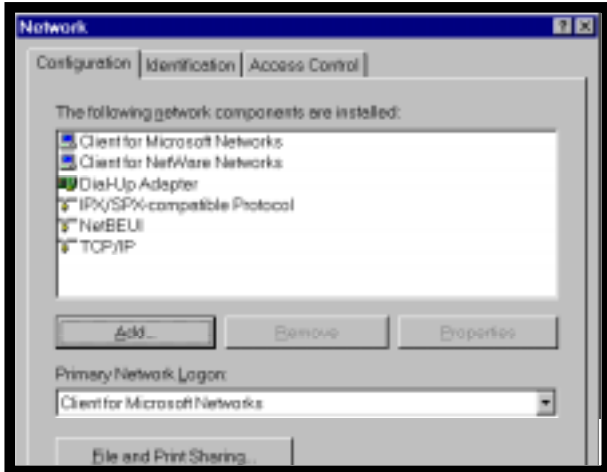


Figure 12. The Network window.

Remove all of the network components except Dial-Up Adapter, TCP/IP, and Client for Microsoft Networks. Click on Client for Netware Networks and then on the Remove button. Click on IPX/SPX-compatible Protocol and then on the Remove button. Click on NetBEUI and then on the Remove button. When you are finished, your screen should look similar to Figure 13.

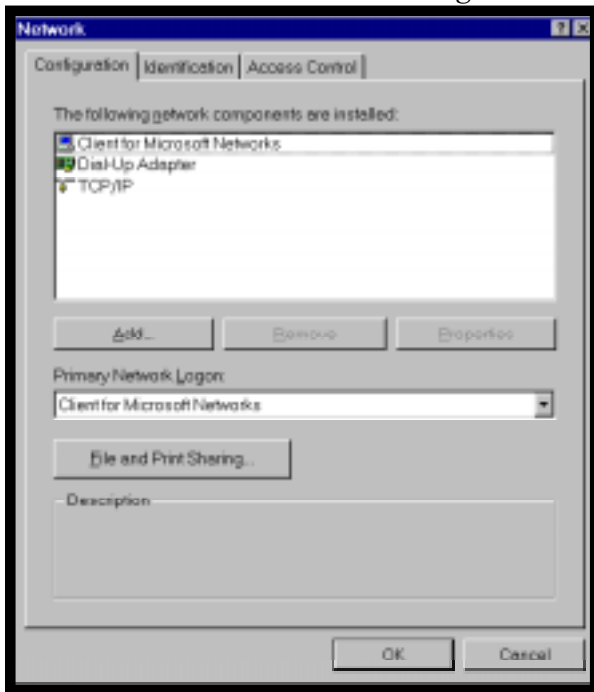


Figure 13. The Network window.

Verify that the Primary Network Logon is set to Client for Microsoft Networks. Click on the OK button. You may be asked for a user name and

password to identify yourself on the Microsoft Network. Fill in User Name but *do not* fill in Password. The user name can be anything that you choose, write it down here: _____.

If you are asked if you want to restart your computer, click on the No button.

Click on TCP/IP and then on the Properties button.

Click on the IP Address tab. The Obtain an IP address automatically option should be selected as shown in Figure 14.



Figure 14. The IP Address tab of the TCP/IP Properties window.

Click on the WINS Configuration tab. The Use DHCP for WINS Resolution option should be selected as shown in Figure 15.

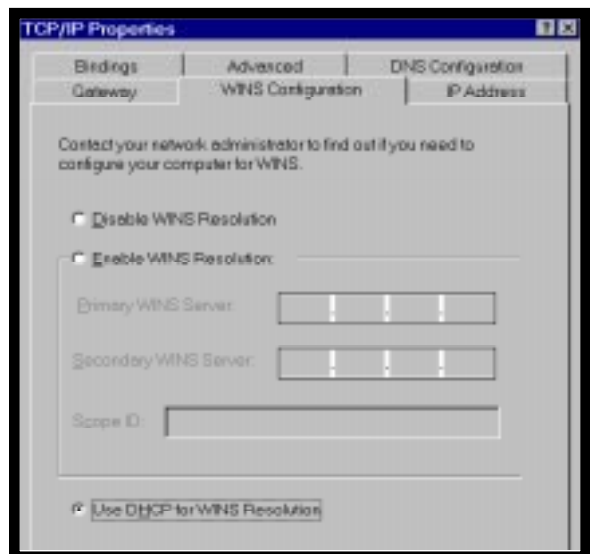


Figure 15. The WINS Configuration tab of the TCP/IP Properties window.

Click on the Gateway tab. All options should be blank as shown in Figure 16.



Figure 16. The Gateway tab of the TCP/IP Properties window.

Click on the DNS Configuration tab. The Disable DNS option should be selected as shown in Figure 17.

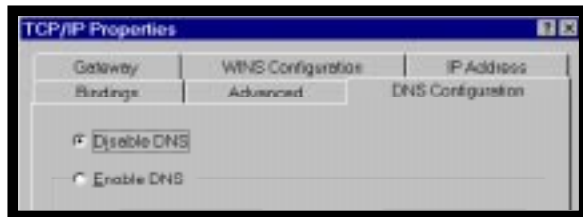


Figure 17. The DNS Configuration tab of TCP/IP Properties.

Click on the Advanced tab. Under Property there should be the word "None." No changes need to be made to this screen as shown in Figure 18.

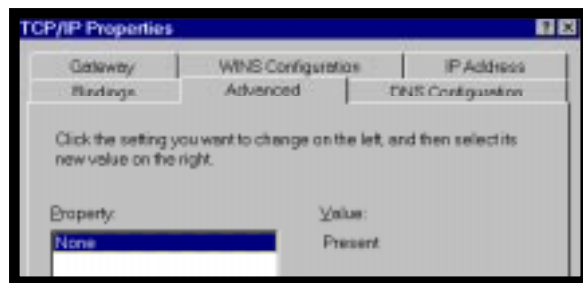


Figure 18. The Advanced tab of the TCP/IP Properties window.

Click on the Bindings tab. The Client for Microsoft Networks should be listed and the box to the left of it should be checked as shown in Figure 19.

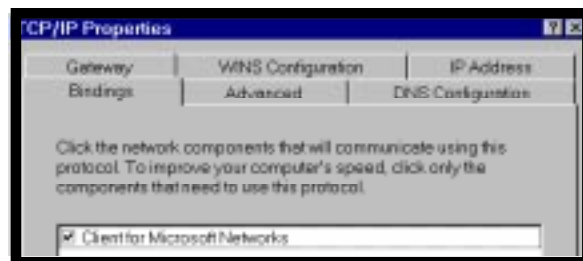


Figure 19. The Bindings tab of the TCP/IP Properties window.

Click on the OK button until all windows are closed.

Restart the machine (click on Start, Shutdown, Restart.)

2. Create a Dial-Up connection

Click on Start, then on Programs, then on Accessories, and then on Dial-Up Networking. You should see the screen shown in Figure 20.

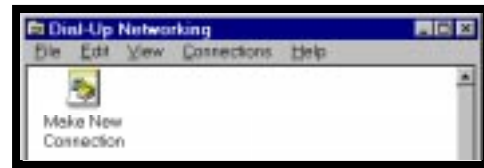


Figure 20. The Dial-Up Networking window.

Double click on Make a New Connection to bring up the window shown in Figure 21.

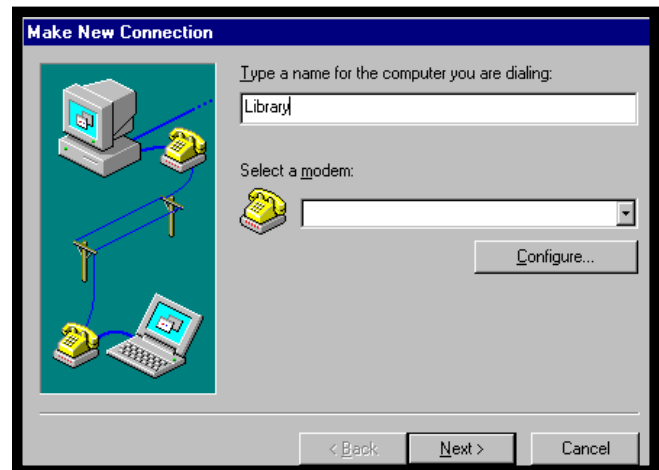


Figure 21. The Make New Connection window.

Type a name for the connection such as **Library**. Choose your modem from the drop-down menu. It is probably the default modem that already appears in the window. Click on the Next button. You will see a screen similar to Figure 22.



Figure 22. The Make New Connection phone number window.

Type the area code and phone number listed on the *General Setup Information* handout.

Click on the Next button. You will see the screen shown in Figure 23 indicating you have successfully created a new connection.



Figure 23. The Make New Connection success window.

Click on the Finish button.

3. Configure the Dial-Up connection.

Right click on the Library (or the name you gave on the Figure 21 screen) icon as shown in Figure 24.

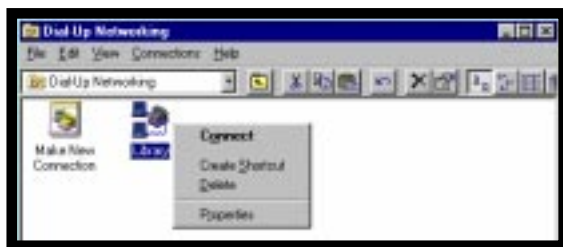


Figure 24. The Dial-Up Networking window showing the result of right clicking on a connection icon.

Click on Properties. You will see a screen similar to Figure 25, but with numbers and modem type.

Click on the Server Type button to bring up the screen shown in Figure 26.

The type of Dial-Up Server should be set to PPP: Windows 95, Windows NT 3.5, Internet. The Log on to network, Enable software compression, and TCP/IP options should have a check mark. The Require encrypted password, NetBEUI, and IPX/SPX Compatible options should *not* be checked.

Click on the TCP/IP Settings button to display the screen shown in Figure 27 on page 6.

Server assigned IP address should be selected.

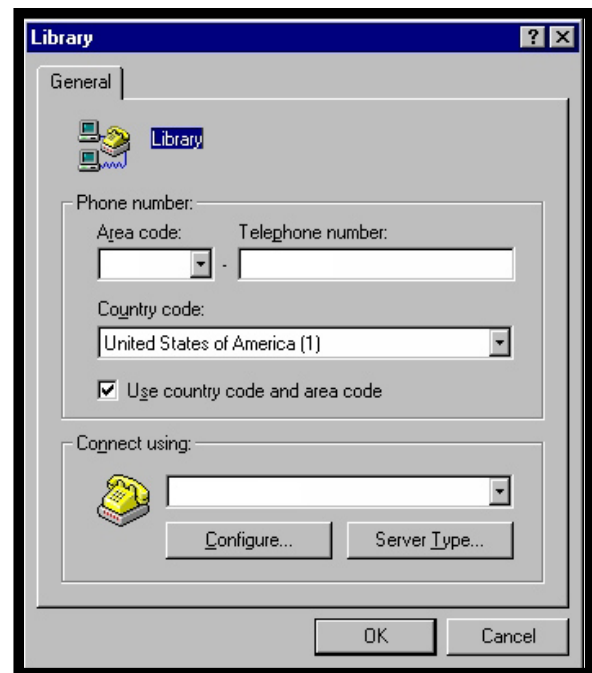


Figure 25. The “Library” (or name you selected for the connection) window.

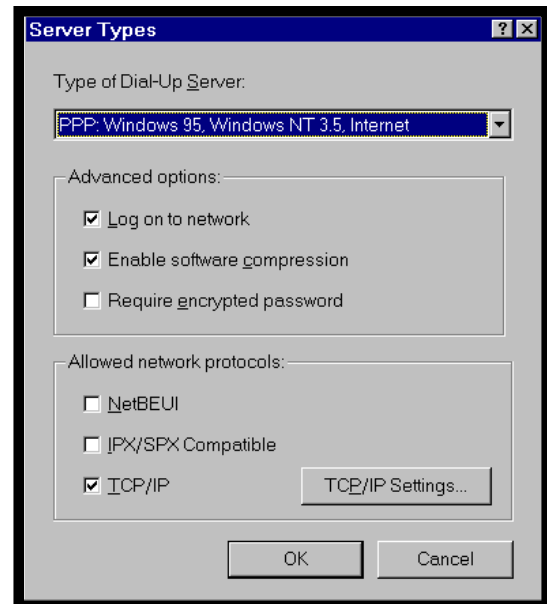


Figure 26. The Server Types window.

Specify name server addresses should be selected. Enter the numbers for the Primary and Secondary DNS located on the *General Setup Information* handout. Note that the cursor “jumps” to the next field after the first two numbers. You may need to type a period to get to the last field.

Click on the OK button. Click on the OK button again. Click on the OK button one more time.

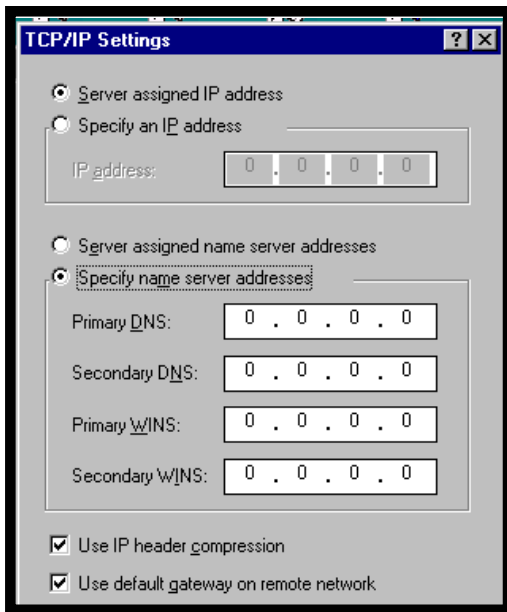


Figure 27. The TCP/IP window before entering DNS numbers.

4. Connect to the Internet!

Double click on the Library (or whatever you named it) connection icon (shown in Figure 24). You will see a screen similar to Figure 28.

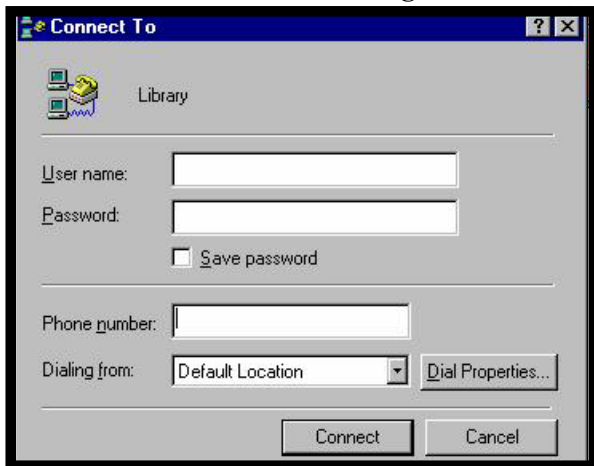


Figure 28. The Connect To window.

Type in the 8-character user name and password listed on the *General Setup Information* handout. Be certain to enter upper and lower case letters as indicated. It is also important to distinguish zero's and O's and one's and lower case L's.

Click on the Connect button. You will see a Connecting window similar to Figure 29.



Figure 29. The Connect To window, with a status of dialing.

If the library's modem answers your modem's call, you will see the screen in Figure 30. *Otherwise you will see a message indicating all of the library's modems are busy. If there's a problem with your modem or phone line, you may see a No Dial Tone message. In this case you will need to refer to "If you are unable to connect" section of the General Setup Information handout.*

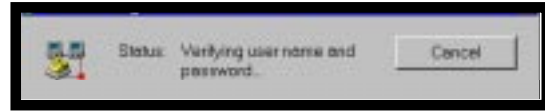


Figure 30. The Connect To window.

If everything is working correctly, including your user name and password, you will see the screen in Figure 31.

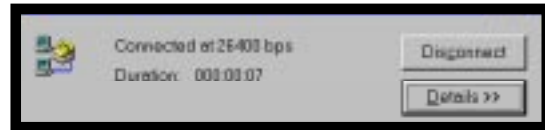


Figure 31. The best screen, indicating you're connected!

Once the Connected box appears, and the Duration is incrementing, you can start your Internet browser program, such as Netscape Navigator or Internet Explorer. *Please note that the speed indicated may be significantly slower than your modem. Many factors such as poor line quality in the home or beyond can slow down a modem.*

5. After You Are Connected

You are ready to start your Web browser software by double clicking on the Netscape or Internet Explorer icon. The browser will login to its default startup page. Congratulations, you are now on the Internet! Please read the "If you are able to connect" section of the *General Setup Information* handout. Also be sure to read step 6 below about disconnecting.

6. To Disconnect

To quit, close your browser software, e.g., File, then Exit or Alt-F4. Click on the Connected to Library... window (this may appear as a small icon on the taskbar usually located at the bottom of the screen). Click on the Disconnect button.