

Specific Setup Information

Windows 95 – Preload

Please note: These steps are ideal for users who will only use the library as their Internet Service Provider. For setting up multiple connections, please refer to the *Windows 95 - Detailed* directions handout.

I. The Internet Connection Wizard

Turn the computer, monitor, and modem (if external) on.

After Windows 95 has started up and you see the desktop with icons, double click on your Web browser icon. See Figure 1 for samples.



Figure 1. Various Web browser icons.

You should see the Welcome to Internet Setup screen shown in Figure 2. *If you do not see this screen, click on the Start button, then Run. Type inetwiz.exe and then press the Enter key.*



Figure 2. The Welcome to Internet Setup screen.

Click on the Next button to bring up the How to Connect screen shown in Figure 3.

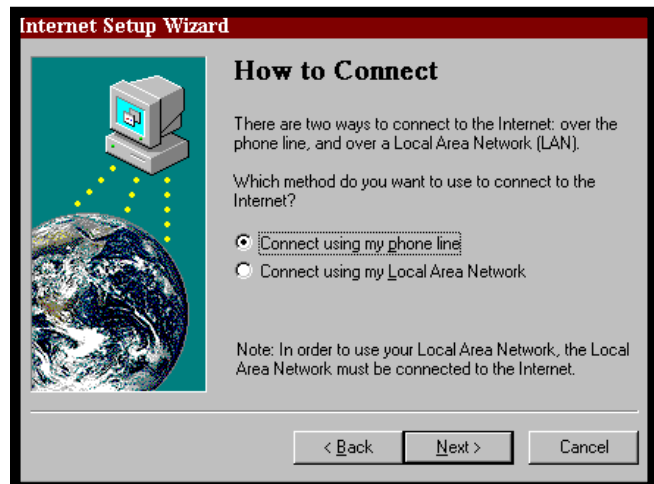


Figure 3. The How to Connect screen.

Select the option “Connect using my phone line” by clicking on the circle to the left of that option.

Click on the Next button to bring up the How to Connect screen shown in Figure 4.



Figure 4. The How to Connect screen.

Select the option that reads, “I already have an account with a different service provider.”

Click on the Next button. You will see the Internet Mail screen shown in Figure 4. E-mail is not available from the library directly; you will have the opportunity to learn about signing up for free e-mail after you are connected to the library.



Figure 4. The Internet Mail screen.

Select the option that reads, “No, I don’t want to use Windows Messaging.”

Click on the Next button. You will see the Service Provider screen shown in Figure 5.



Figure 4. The Internet Mail screen.

Type **library** as the of the service provider.

Click on the Next button to bring up the Phone Number screen shown in Figure 5.

Enter the area code and phone number of the library’s modem pool listed on the *General Setup Information* handout.

Click on the Next button to bring up the User Name and Password screen shown in Figure 6.

Type in your 8-character user name and password listed on the *General Setup Information* handout. Be certain to enter upper and lower case letters as indicated. It is also important to distinguish zero’s



Figure 5. The Phone Number screen.



Figure 6. The User Name and Password screen.

and O’s and one’s and lower case L’s.

Click on the Next button to bring up the IP Address screen shown in Figure 7.



Figure 7. The IP Address screen.

Select the option that reads, “My Internet Service Provider automatically assigns me one.”

Click on the Next button to bring up the DNS Server Address screen shown in Figure 8.



Figure 8. The DNS Server Address screen.

Type the number of the Primary DNS listed on the *General Setup Information* handout for the DNS server.

Press the Tab key.

Type the number of the Secondary DNS listed on the *General Setup Information* handout for the Alternate DNS Server.



Figure 9. The Complete configuration screen.

Click on the Next button to bring up the Complete configuration screen shown in Figure 9.

Click on the Finish button.

2. Connect to the Internet!



Figure 10. The Connect To window.

Double click on your Web browser icon. You will see a Connect To screen similar to Figure 10.

Type in your 8-character user name and password given to you by the library. Be certain to enter upper and lower case letters as indicated. It is also important to distinguish zero's and O's and one's and lower case L's.

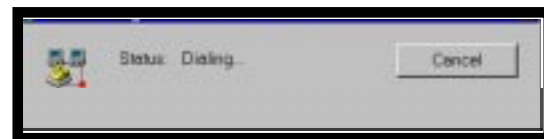


Figure 11. The Connect To window, with a status of dialing.

Click on the Connect button. You will see a Connecting window similar to Figure 11.

If the library's modem answers your modem's call, you will see the screen in Figure 12. Otherwise you will see a message indicating all of the library's modems are busy. *If there's a problem with your modem or phone line, you may see a No Dial*

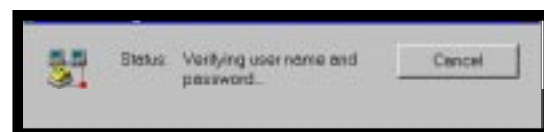


Figure 12. The Connect To window verifying user name and password.

Tone message. In this case you will need to refer to "If you are unable to connect" section of the General Setup Information handout.

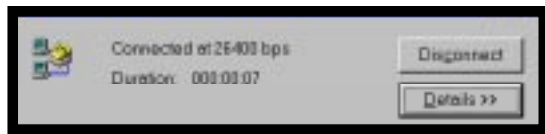


Figure 13. The best screen yet, indicating you are connected and the speed.

If everything is working correctly, including your user name and password, you will see the screen in Figure 13.

Once the Connected box appears, and the Duration is incrementing, your browser program should open. You should see a default browser page load in the window, such as Netscape Home or Microsoft Startup.

3. After You Are Connected

Please read the “If you are able to connect” section of the *General Setup Information* handout. Also be sure to read step 4 below about disconnecting.

4. To Disconnect

To quit, close your browser software, e.g., File, then Exit or Alt-F4. *If there is a Connected to Library... window (this may appear as a small icon on the taskbar usually located at the bottom of the screen), double click on it. Click on the Disconnect button.*

5. To Connect Again

When you are ready to connect to the library again, double click on your Web browser’s icon. A screen similar to Figure 10 will appear.

Verify that your username and password are entered.

Click on the Connect button and then follow the dial-in procedure as described on page 3, column 2.