

# Specific Setup Information

## Windows 98 – Detailed

### I. Install Dial-Up Networking

Turn the computer, monitor, and modem (if external) on.

After Windows has started up and you see the desktop with icons, click on Start, then Settings, then Control Panel as shown in Figure 1.

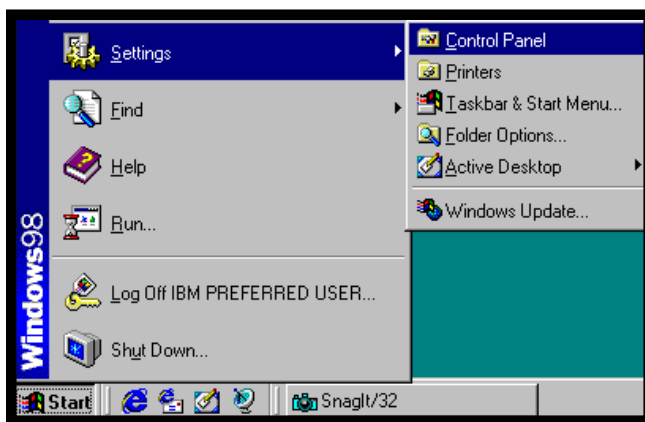


Figure 1. Starting the Control Panel from Start.

You will see a window similar to Figure 2.

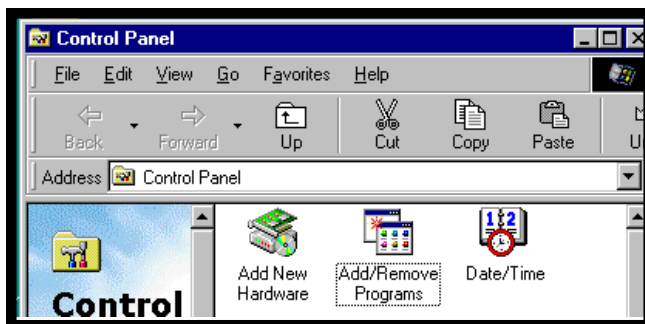


Figure 2. The Control Panel window.

Double click on the Add/Remove Programs icon.

Click on the Windows Setup tab.

Click on Communications. Your screen should resemble Figure 3.

Click on the Details button.

Make sure there is a check mark in the box next to Dial-Up Networking and Hyperterminal as shown in Figure 4. Other components may or

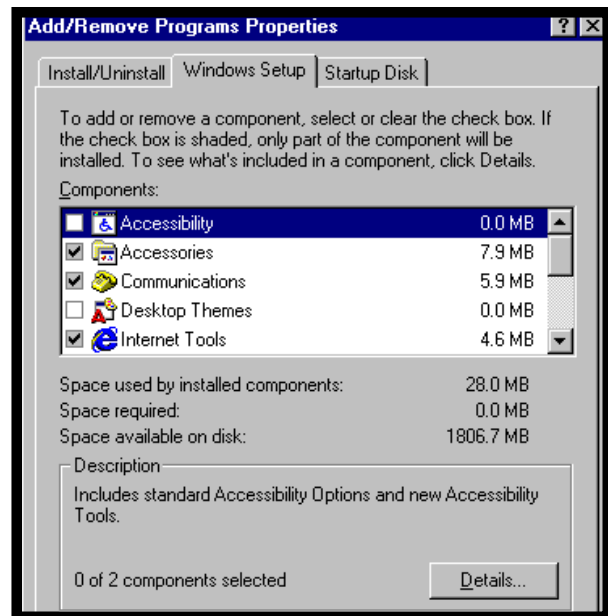


Figure 3. The Add/Remove Programs window.

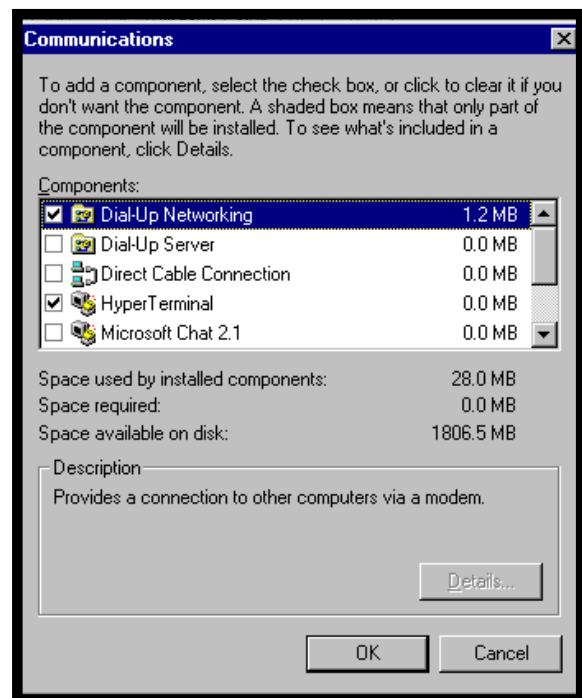


Figure 4. The Communications window.

may not be checked, depending on your needs. Click on the OK button. Click on the OK button again. You may be asked at this time to insert the

Windows 98 CD. Follow the on-screen instructions, and restart your machine if asked to do so.

From the Control Panel window (click on Start, Settings, Control Panel), double click on the "Network" icon shown in Figure 5.

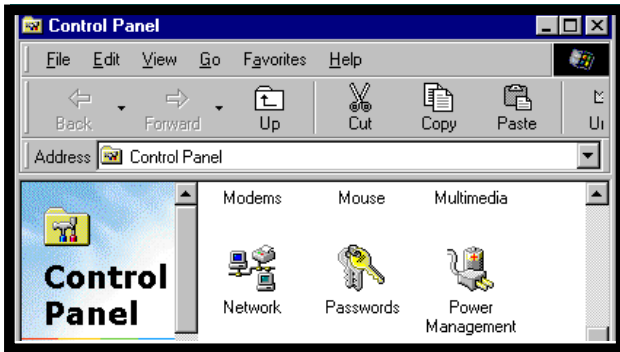


Figure 5. The Control Panel window.

The Network window shown in Figure 6 will appear.

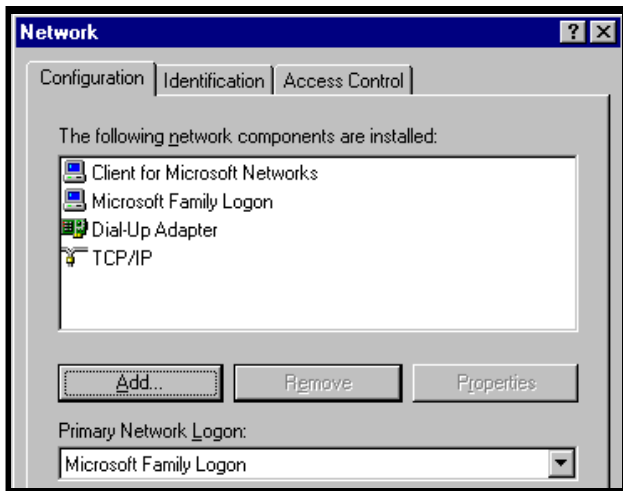


Figure 6. The Network window.

The Dial-Up Adapter, TCP/IP, and Microsoft Family Logon must be listed as installed. *If these are already installed on your machine, please skip to the paragraph just above Figure 9.*

To install the Dial-Up Adapter, click on the Add button to bring up the window in Figure 7.

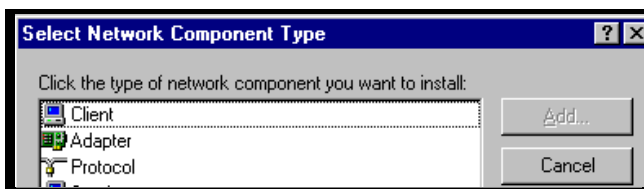


Figure 7. The Select Network Component window.

Click on Adapter and then on the Add button. The Select Network Adapters window shown in Figure 8 will appear.

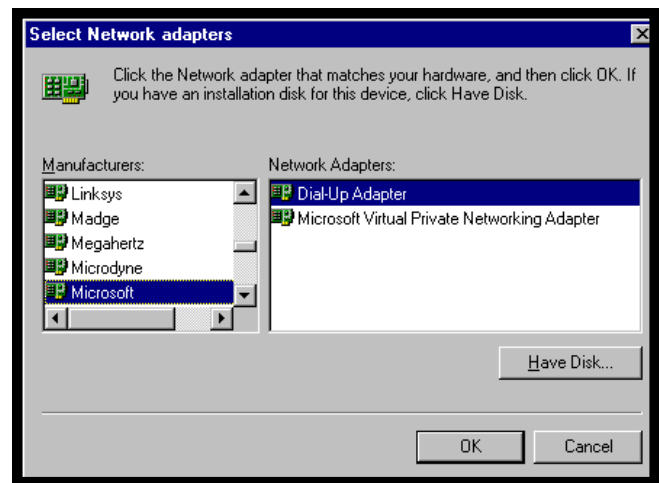


Figure 8. The Select Network Adapters window.

Scroll down the manufacturers list and then click on Microsoft. Under Network Adapters, click on Dial-Up Adapter. Click on the OK button.

Verify that the Primary Network Logon is set to Microsoft Family Logon. Click on the OK button. You may be asked for a user name and password to identify yourself on the Microsoft Family Logon. Fill in User Name but *do not* fill in Password. The user name can be anything that you choose, write it down here: \_\_\_\_\_.

If you are asked if you want to restart your computer, click on the No button.

Double click on the Network icon in the Control Panel window shown in Figure 5.

Click on TCP/IP and then on the Properties button. You will see a warning message similar to Figure 9.

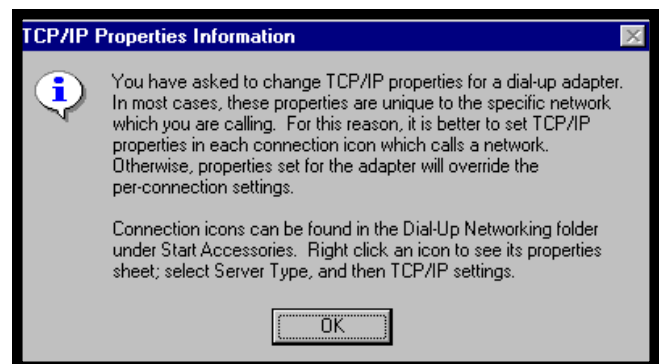


Figure 9. The TCP/IP Properties Information message.

Click on the OK button. You will see a screen similar to Figure 10 on page 3.

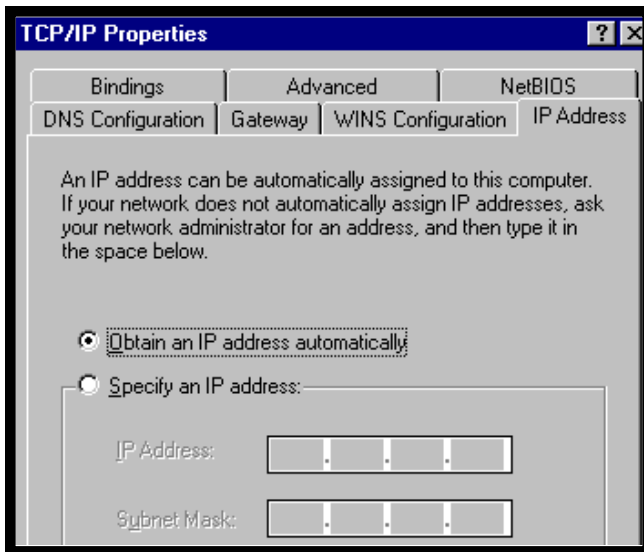


Figure 10. The IP Address tab of the TCP/IP Properties window.

Click on the IP Address tab. The Obtain an IP address automatically option should be selected as shown in Figure 10.

Click on the WINS Configuration tab. The Use DHCP for WINS Resolution option should be selected as shown in Figure 11.

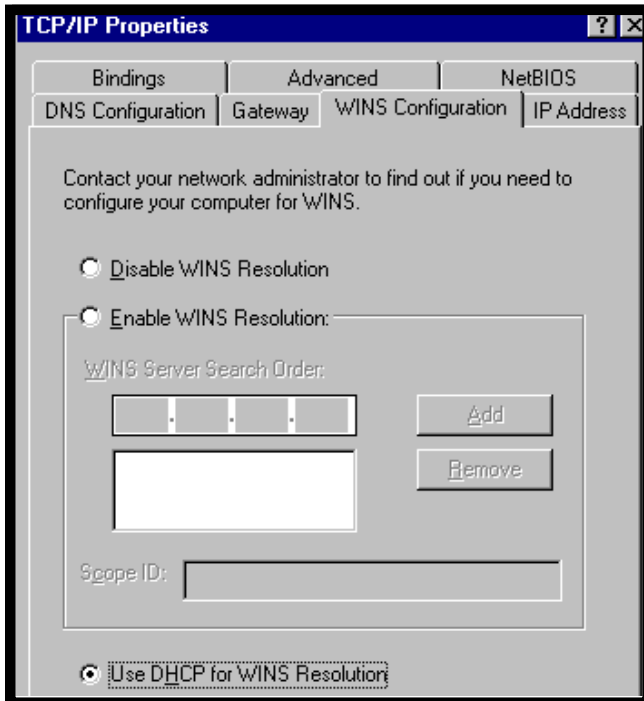


Figure 11. The WINS Configuration tab of the TCP/IP Properties window.

Click on the Gateway tab. All options should be blank as shown in Figure 12.

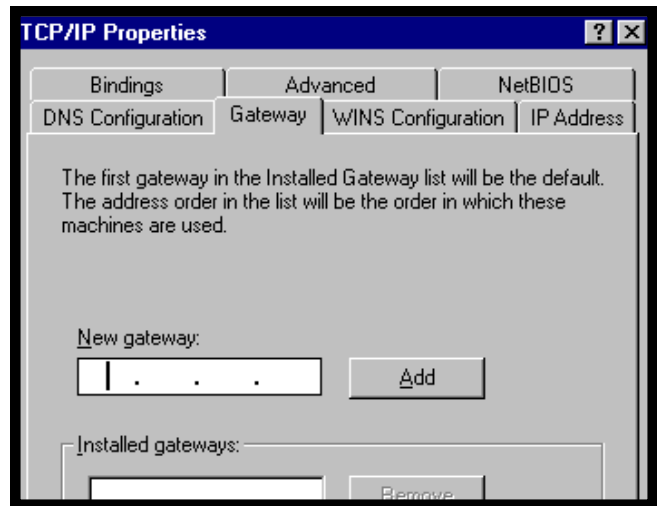


Figure 12. The Gateway tab of the TCP/IP Properties window.

Click on the DNS Configuration tab. The Disable DNS option should be selected as shown in Figure 13.



Figure 13. The DNS tab of the TCP/IP Properties window.

Click on the Advanced tab. Under Property there should be the word "None." No changes need to be made to this screen as shown in Figure 14.

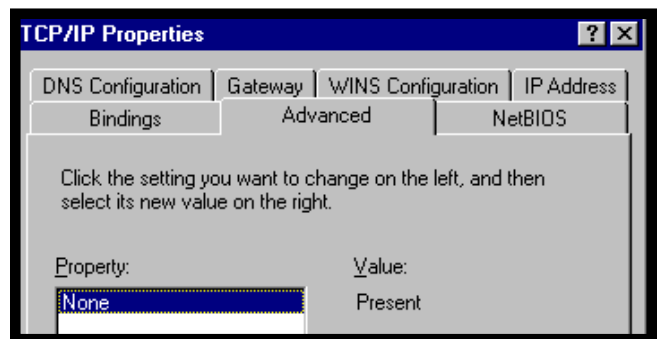


Figure 14. The Advanced tab of the TCP/IP Properties window.

Click on the Bindings tab. The Microsoft Family Logon should be listed and the box to the left of it should be checked as shown in Figure 15 on page 4.

Click on the NetBIOS tab. It should resemble Figure 16 on page 4.

Click on the OK button. Click on the OK button again.

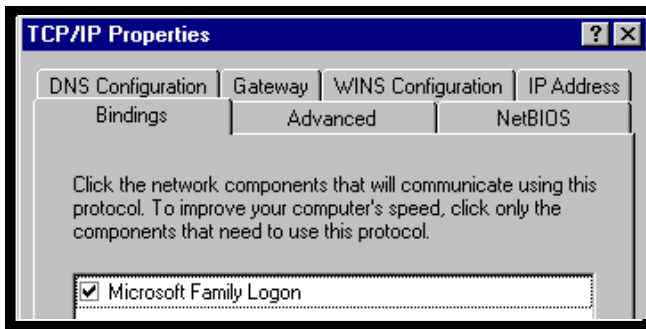


Figure 15. The Bindings tab of the TCP/IP Properties window.

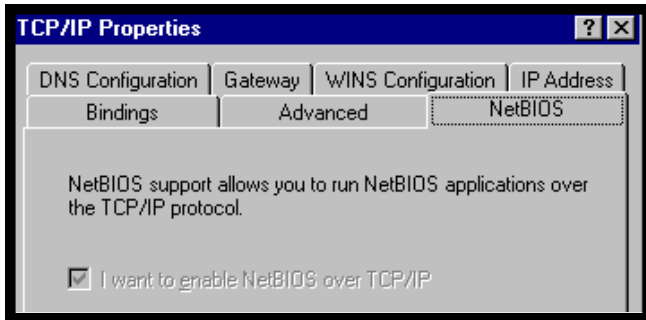


Figure 16. The NetBIOS tab of the TCP/IP Properties window.

Click on the Yes button to restart the machine.

## 2. Create a Dial-Up connection

Click on Start, then on Programs, then on Accessories, then on Communications, and then on Dial-Up Networking. You should see the screen shown in Figure 17.

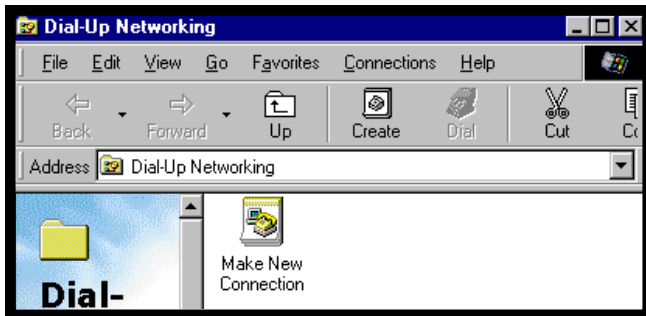


Figure 17. The Dial-up Networking window.

Double click on Make a New Connection to bring up the window shown in Figure 18.

Type a name for the connection such as **Library**. Choose your modem from the drop-down menu. *It is probably the default modem that already appears in the window.* Click on the Next button. You will see a screen similar to Figure 19.

Type the area code and phone number listed on the *General Setup Information* handout.

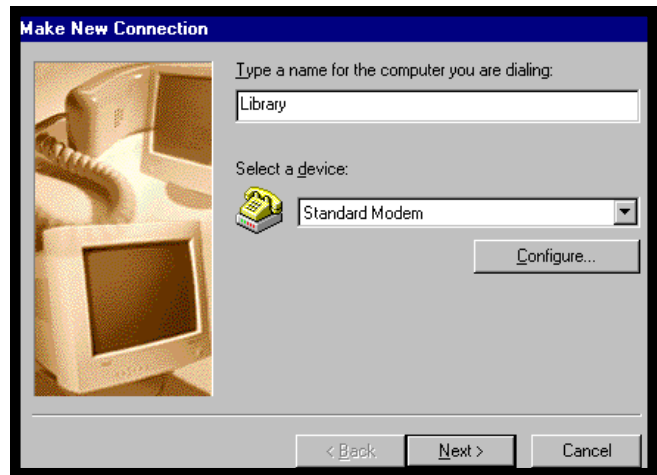


Figure 18. The Make New Connection window.

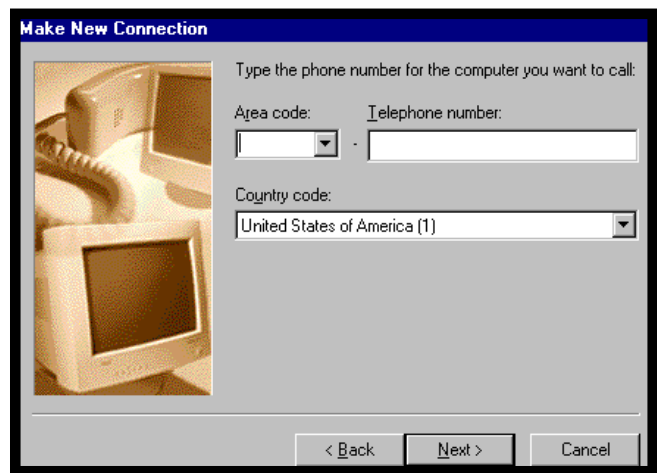


Figure 19. The second Make New Connection window.

Click on the Next button. You will see the screen shown in Figure 20 indicating you have successfully created a new connection.



Figure 20. The third Make New Connection screen.

Click on the Finish button.

### 3. Configure the Dial-Up connection.

Right click on the Library (or the name you gave on the screen in Figure 18) icon as shown in Figure 21.

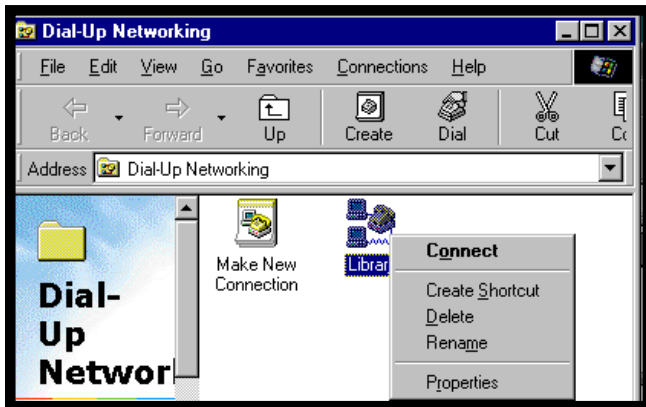


Figure 21. The result of right clicking on the new connection.

Click on Properties. You will see a screen similar to Figure 22, but with numbers and modem type.



Figure 22. The General tab of the connection window.

Click on the Server Types button to bring up the screen shown in Figure 23.

The type of Dial-Up Server should be set to PPP: Internet, Windows NT Server, Windows 98. The Log on to network, Enable software compression, and TCP/IP options should have a check mark. The Require encrypted password, Require data encryption, Record a log file for this connection, NetBEUI, and IPX/SPX Compatible options should *not* be checked.

Click on the TCP/IP Settings button to display the screen shown in Figure 24.

Server assigned IP address should be selected.

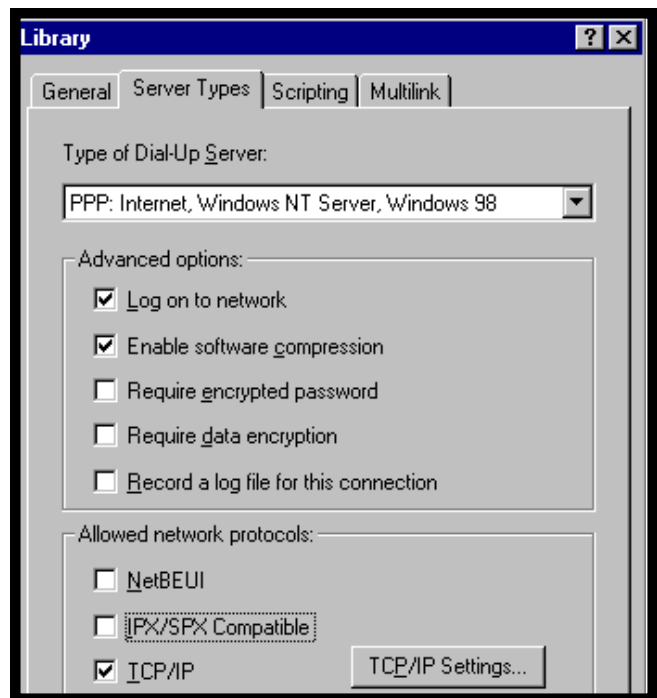


Figure 23. The Server Types tab of the connection window.

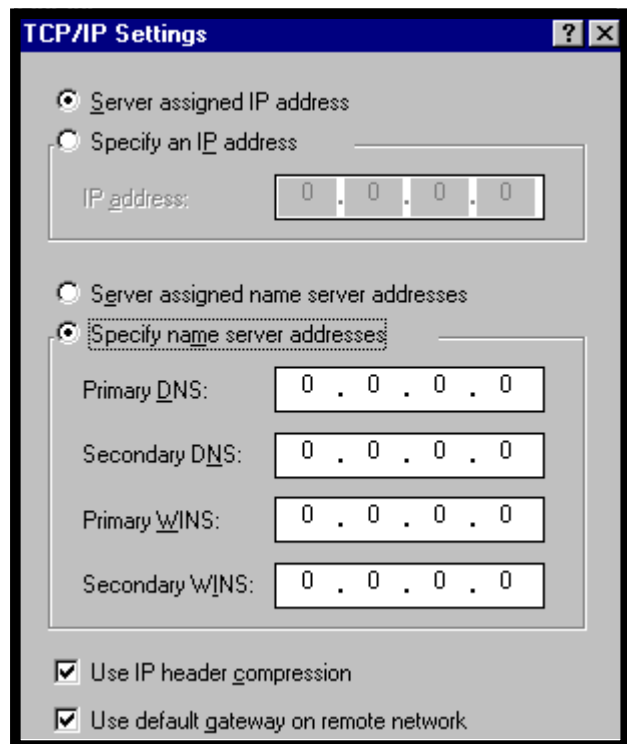


Figure 24. The TCP/IP Settings window.

Specify name server addresses should be selected. Enter the numbers for the Primary and Secondary DNS located on the *General Setup Information* handout. Note that the cursor “jumps” to the next field after the first two numbers. You may need to type a period to get to the last field. Click on the OK button. Click on the OK button again.

## 4. Connect to the Internet!

Double click on the Library (or whatever you named it) connection icon (shown in Figure 21). You will see a screen similar to Figure 25.

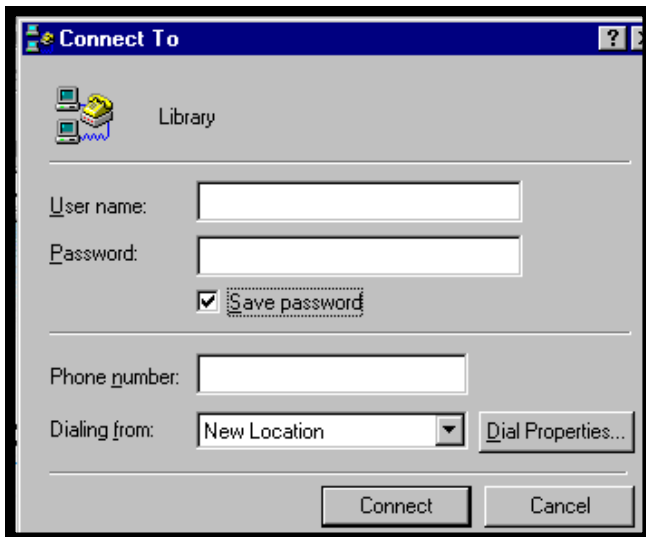


Figure 25. The Connect To window.

Type in the 8-character user name and password listed on the *General Setup Information* handout. Be certain to enter upper and lower case letters as indicated. It is also important to distinguish zero's and O's and one's, upper case I's and lower case L's.

Click on the Connect button. You will see a Connecting window similar to Figure 26.

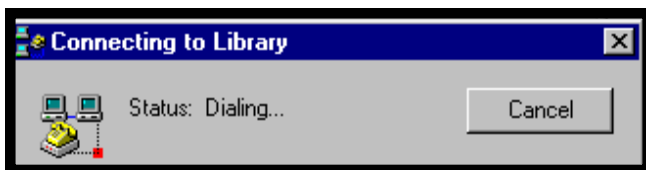


Figure 26. The Connecting to window.

If the library's modem answers your modem's call, you will see the screen in Figure 27. *Otherwise you will see a message indicating all of the library's modems are busy. If there's a problem with your modem or phone line, you may see a No Dial Tone message. In this case you will need to refer to "If you are unable to connect" section of the General Setup Information handout.*

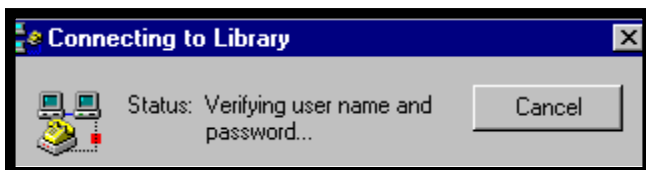


Figure 27. The Connecting to window.

If everything is working, including your user name and password, you may see the screen shown in Figure 28, otherwise you will just see a connection icon on the task bar in the lower right hand corner as shown in Figure 29. *If you see the window shown in Figure 28, click on the Close button.*

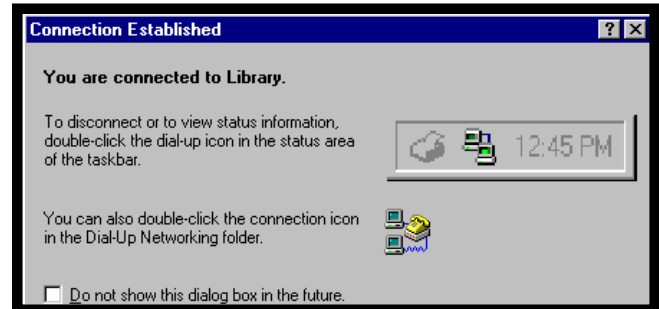


Figure 28. The optional Connection Established window.



Figure 29. The connection icon on the taskbar.

## 5. After You Are Connected

You are ready to start your Web browser software by double clicking on the Netscape or Internet Explorer icon. The browser will login to its default startup page. Congratulations, you are now on the Internet! Please read the "If you are able to connect" section of the *General Setup Information* handout. Also be sure to read step 6 below about disconnecting.

## 6. To Disconnect

To quit, close your browser software, e.g., File, then Exit or Alt-F4. Double click on the connection icon shown in Figure 29. You will see a screen similar to Figure 30.

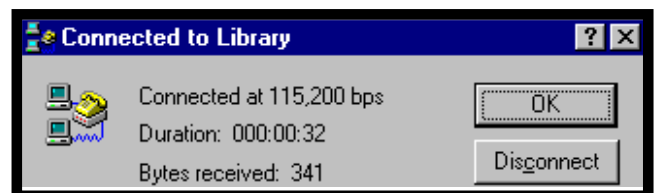


Figure 30. The Connected to window.

Click on the Disconnect button.