

Specific Setup Information

Windows 98 – Preload

Please note: These steps are ideal for users who will use only the library as their Internet Service Provider. For setting up multiple connections, please refer to the *Windows 98 - Detailed* directions handout.

I. The Internet Connection Wizard

Turn the computer, monitor, and modem (if external) on.

After Windows 98 has started up and you see the desktop with icons, double click on your Web browser icon. See Figure 1 for samples.



Figure 1. Various Web browser icons.

You should see the Internet Connection Wizard welcome screen shown in Figure 2. *If you do not see this screen, click on the Start button, then Run. Type icwconn1.exe and then press the Enter key.*

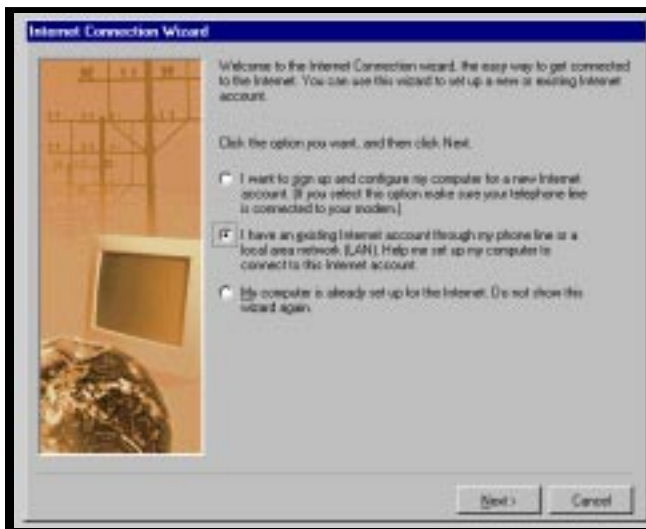


Figure 2. The Internet Connection Wizard welcome screen.

Click on the circle next to the “I have an existing Internet account...” option.

Click on the Next button to bring up the Select an Option screen shown in Figure 3.

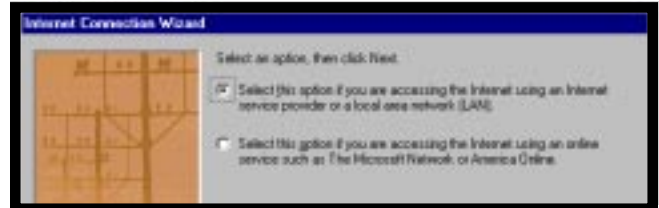


Figure 3. The Select an Option screen.

Select the option for “. . . using an Internet service provider or local area network (LAN)” by clicking on the circle to the left of that option.

Click on the Next button to bring up the Set Up Your Internet Connection screen shown in Figure 4.

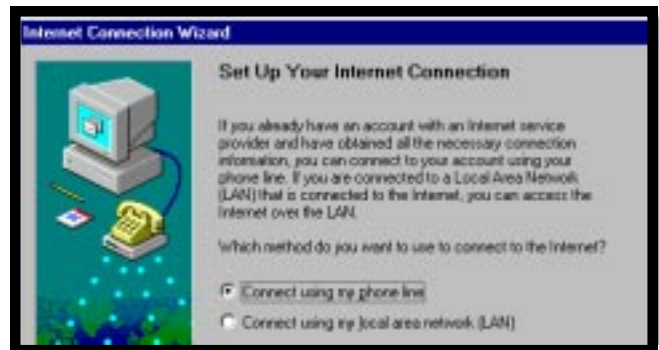


Figure 4. The Set Up Your Internet Connection screen.

Select the option that reads, “Connect using my phone line.”

Click on the Next button. You will see the Dial-Up Connection screen shown in Figure 5.



Figure 5. The Dial-Up Connection screen.

Select the “Create a new dial-up connection” option. Click on the Next button. You will see the Phone Number screen shown in Figure 6.



Figure 6. The Phone Number screen.

Enter the phone number of the library’s modem pool listed on the *General Setup Information* handout. If you need to dial the area code, click on the box to the left of “Dial using area code. . .” and then enter the area code.

Click on the Next button. You will see the User Name and Password screen shown in Figure 7.

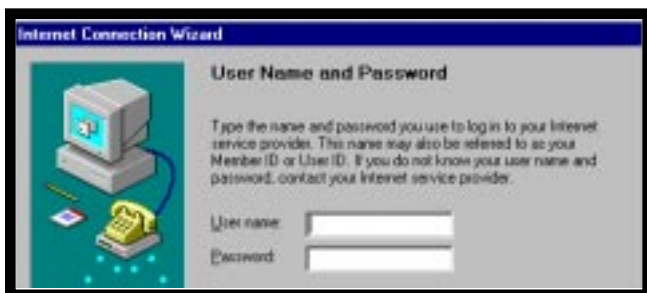


Figure 7. The User Name and Password screen.

Type in your 8-character user name listed on the *General Setup Information* handout. Press the Tab key. Type your password. It is very important to distinguish between upper and lower case letters. Be especially careful of numeral zero and capital letter O, and numeral one and lower case letter L.

Click on the Next button. You will see the Advanced Settings screen shown in Figure 8.

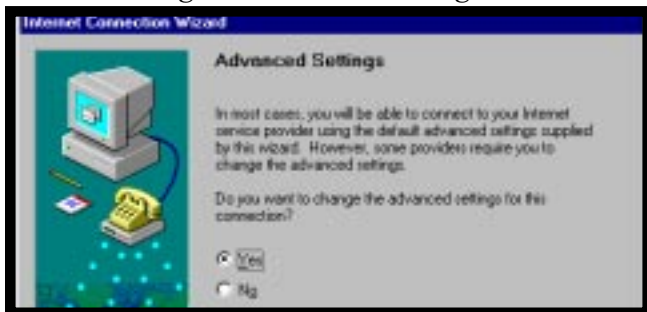


Figure 8. The Advanced Settings screen.

Select Yes to change the advanced settings.

Click on the Next button. You will see the Connection Type screen shown in Figure 9.

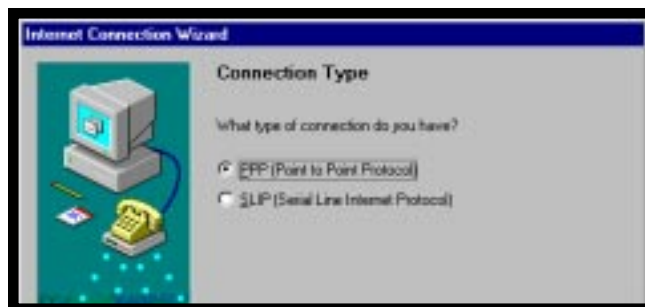


Figure 9. The Connection Type screen.

Select the “PPP (Point to Point Protocol)” option.

Click on the Next button. You will see the Logon Procedure screen shown in Figure 10.

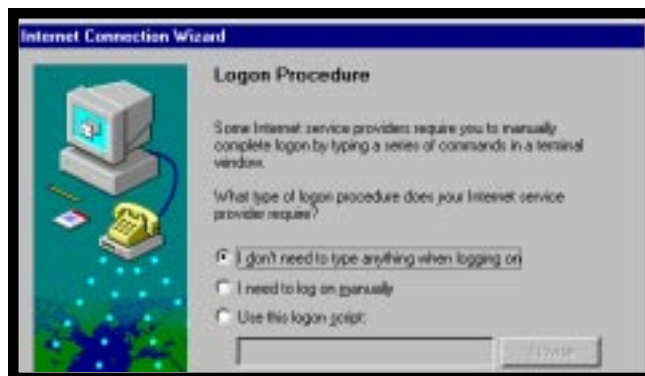


Figure 10. The Logon Procedure screen.

Select “I don’t need to type anything. . .” and then click on the Next button. You will see the IP Address screen shown in Figure 11.

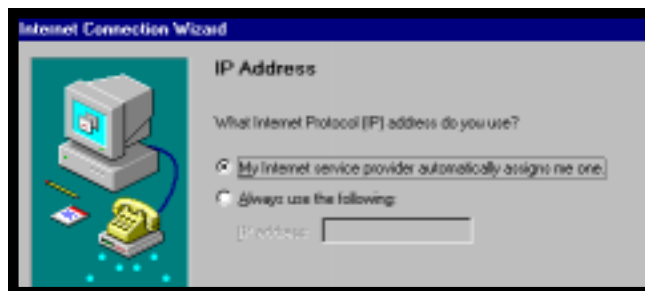


Figure 11. The IP Address screen.

Select the “My Internet service provider automatically assigns me one” option.

Click on the Next button. You will see the DNS Server Address screen shown in Figure 12 on page 3.



Figure 12. The DNS Server Address screen.

Select the “Always use the following” option.

Type the number of the Primary DNS listed on the *General Setup Information* handout for the DNS server.

Press the Tab key.

Type the number of the Secondary DNS listed on the *General Setup Information* handout for the Alternate DNS Server.

Click on the Next button. You will see the Dial-Up Connection Name screen shown in Figure 13.

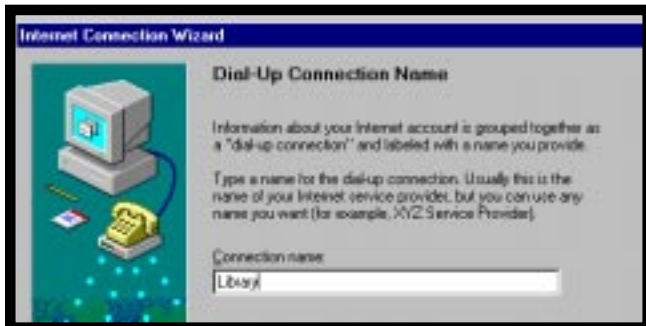


Figure 13. The Dial-Up Connection screen.

Type **Library** as the name of the connection.

Click on the Next button. You will see the Set Up Your Internet Mail Account screen shown in Figure 14.

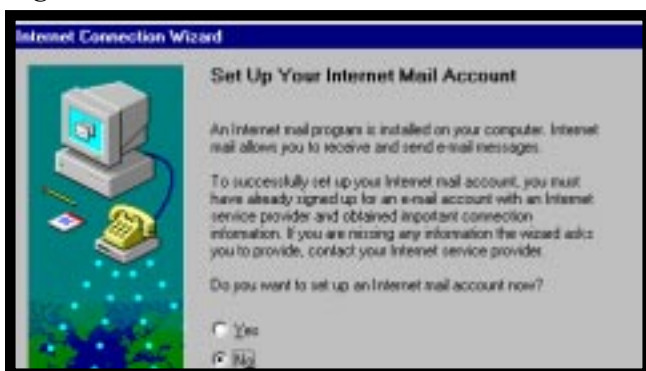


Figure 14. The Set Up Your Internet Mail Account screen.

E-mail is not available from the library directly; you will have the opportunity to learn about signing up for free e-mail after you are connected to the library.

Select the “No” option and then click on the Next button.

You will see the Set Up Your Internet News Account screen shown in Figure 15.



Figure 15. The Set Up Your Internet News Account screen.

News services are not available from the library directly. Select the “No” option and then click on the Next button.

You will see the Set Up Your Internet Directory Service screen shown in Figure 16.

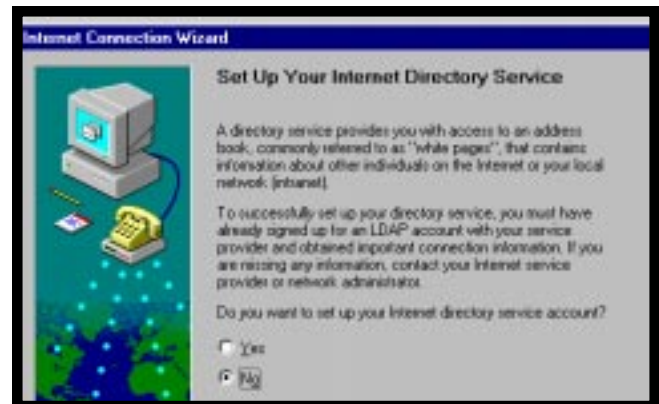


Figure 16. The Internet Directory Service screen.

Select the “No” option and then on the Next button. You will see the Complete Configuration screen shown in Figure 17.



Figure 17. The Complete Configuration screen.

Click on the Finish button.

2. Connect to the Internet!

Double click on your Web browser's icon (see Figure 1 on page 1 for examples). You will see a screen similar to Figure 18.

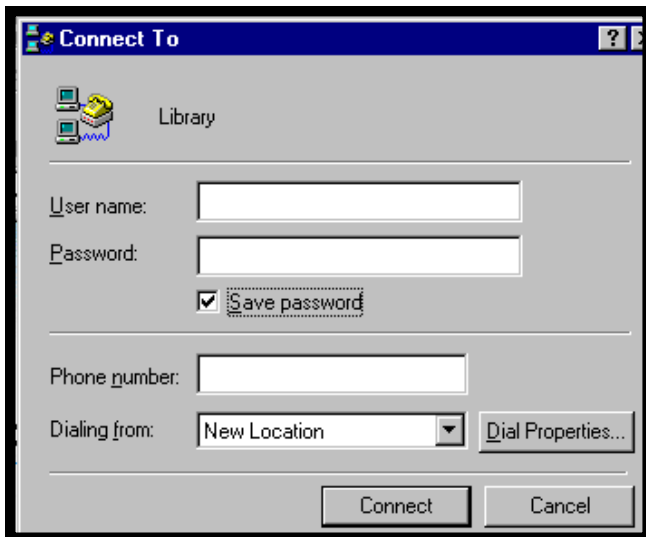


Figure 18. The Connect To window.

Type in your 8-character user name listed on the *General Setup Information* handout. Press the Tab key. Type your password. It is very important to distinguish between upper and lower case letters. Be especially careful of numeral zero and capital letter O, and numeral one and lower case letter L.

Click on the Connect button. You will see a Connecting window similar to Figure 19.

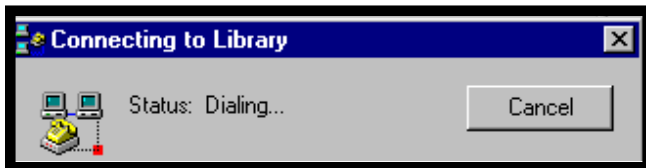


Figure 19. The Connecting to window.

If the library's modem answers your modem's call, you will see the screen in Figure 20. *Otherwise you will see a message indicating all of the library's modems are busy. If there's a problem with your modem or phone line, you may see a No Dial Tone message. In this case you will need to refer to "If you are unable to connect" section of the General Setup Information handout.*

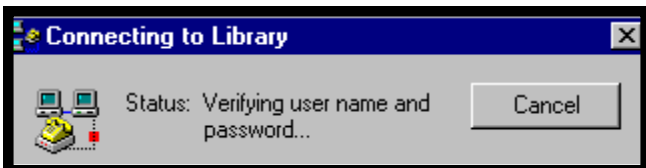


Figure 20. The Connecting to window.

If everything is working, you should see either the screen shown in Figure 21 or just a connection icon on the task bar in the lower right hand corner as shown in Figure 22. *If you see the window shown in Figure 21, click on the Close button.*

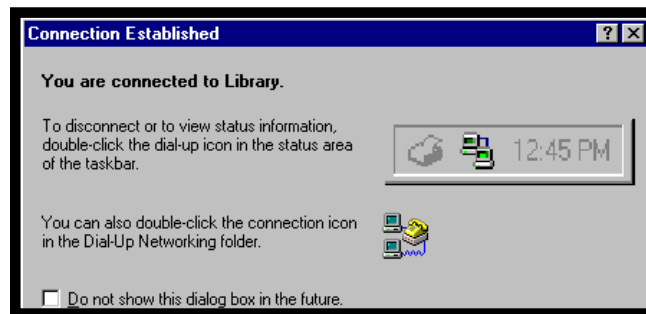


Figure 21. The optional Connection Established window.



Figure 22. The connection icon on the taskbar.

3. After You Are Connected

Congratulations, you are now on the Internet! Please read the "If you are able to connect" section of the *General Setup Information* handout. Also be sure to read step 4 below about disconnecting.

4. To Disconnect

To quit, close your browser software, e.g., File, then Exit or Alt-F4. Double click on the connection icon shown in Figure 22. You will see a screen similar to Figure 23.

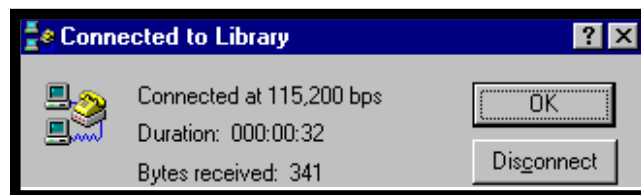


Figure 23. The Connected to window.

Click on the Disconnect button.